



*Community board plan*  
2021 - 2024

WALLACE TAKITIMU





# WELCOME...

I am pleased to present this Wallace Takitimu Community Board Plan to you.

As representatives of our unique community, we believe it strongly reflects the positive approach needed to ensure we all can continue to prosper.

We are fortunate to have a united community which both celebrates success and, when the chips are down, pulls together to support each other in the face of adversity.

The distinctive attributes of Wallace Takitimu and the people who proudly call the area home need to be protected. We are advocates – proud, staunch and with an unwavering sense of right and wrong.

It was vital to engage with our community to determine what's important.

We listened and now aim to achieve:

- A vibrant Wallace Takitimu area which attracts people, businesses and visitors resulting in prosperity
- A strong, connected and inclusive community
- A healthy, safe community with access to quality facilities, amenities and services
- A community whose Council fosters engagement

Testament to our success will be working collaboratively to accomplish those outcomes.

We are optimistic we can advance and look forward to expanding relationships to make it happen.

Your community board is at the coalface for you. Let's work together to realise our true potential as a community.

*Andre*



# OUR VISION

**A self-reliant, tidy, safe, thriving community  
– a great place to visit and live**





# Wallace Takitimu Community Board Plan



Through various engagement and consultation activities, the Wallace Takitimu community told us what they loved about their area.

What they see as weaknesses and challenges and the opportunities they see going forward.

Workshops were also held with the Wallace Takitimu Community Board.

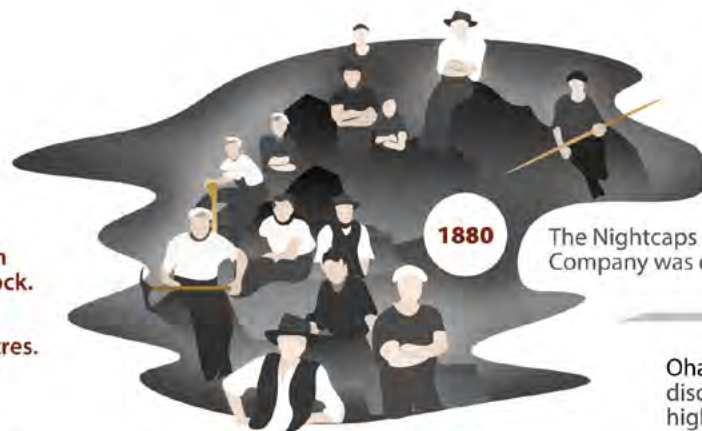


## Wallace Takitimu communities include:

Aparima, Avondale, Bayswater, Crawfords, Drummond, Dunearn, Five Roads, Gladfield, Heddon Bush, Isla Bank, Nightcaps, Ohai, Opio, Otahuti, Otautau, Ringway, Scotts Gap, Spar Bush, Tinkertown, Waikouro, Wairio, Woodlaw, Wreys Bush.

1853

The land in the Otautau area was alienated from Maori through the purchase of the Murihiku Block. The purchase left Maori south of the Waitaki (excluding the Otakou Block) with only 4,630 acres.

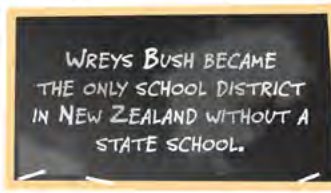


1880

The Nightcaps Coal Company was established.

1899

The St Peter's Convent School was opened in Wreys Bush.



1915

Ohai was founded after the discovery of large amounts of high quality coal in the area.

108 men produced a record output of 63,651 tonnes of coal.



1918

Over 50 people from Nightcaps died from the Spanish flu influenza epidemic



1917

1925

Coal production boomed in Ohai when the Ohai Railway Board opened a new line linking Wairio to the Ohai Railway District.



1964

George Begg, Drummond's most famous son, began building racing cars from his Drummond Garage. These cars included nine F5000 which raced against the best drivers and cars in the world.



1988

Ringway Homestead was listed as a Historical Place Category 1. It is the only house known to have been built of the local limestone, other than one at Gummies Bush which has become a hay shed.



1990s

The Otautau sale yards which once handled tens of thousands of sheep annually, closed.

1992

New Zealand Railways bought the Ohai Railway Board for \$1.2 million. This sum now forms the basis for a trust, the Ohai Railway Fund, that provides grant funding for local community projects.



2010

The former Otautau Courthouse reflects the town's importance as a rural centre in the early years of the twentieth century. It was therefore is listed as a Historic Place Category 2.

2018

The Ohai Railway Board Office and Depot (Former) was listed as a Historic Place Category 1. It has historical significance as one of the few private rail lines established in New Zealand and one of only two to run at a financial profit.







## Wallace Takitimu population 3426

Male	54%
Female	46%
Under 15	22%
15-29 years	19%
30-64 years	46%
65 and over	13%

<b>Ethnic makeup</b>	
European	77%
Maori	13%
Pacific people	1%
Asian	7%
Other	2%

<b>Work and labour force status</b>	
Employed full-time	58%
Employed part-time	17%
Unemployed	2%
Not in the labour force	23%

<b>Home ownership</b>	
Own or partly own	50%
Do not own	50%





# Our people value

Strong sense of community

Central location

Good access to emergency services

Abundance of recreational facilities



# By the community for the community

This plan is a reflection of a community working together to build a better now and a future we can all be proud of.



Four main themes  
emerged when discussing  
the Wallace Takitimu area.

1 A vibrant Wallace Takitimu area that attracts people, businesses and visitors resulting in prosperity

2 Wallace Takitimu is a strong, connected and inclusive community

3 A healthy, safe community with access to quality facilities, amenities and services

4 A community whose Council fosters community engagement





How can we create a place that will attract  
people, businesses and visitors?





## OUTCOME ONE

A VIBRANT WALLACE TAKITIMU AREA THAT ATTRACTS PEOPLE, BUSINESSES AND VISITORS RESULTING IN PROSPERITY

The Wallace Takitimu community see an opportunity to attract people, businesses and visitors that assists in the creation of vibrant, exciting towns ultimately resulting in employment growth for the area.

Currently there are many vacant shops in the towns contributing to less vibrant places to be. Attracting people, visitors and businesses to the area, supporting current local businesses and employing locally is seen as important to the future sustainability of the area.





How will we create more opportunities for  
growth and employment?



# CONNECTED COMMUNITY IDEAS



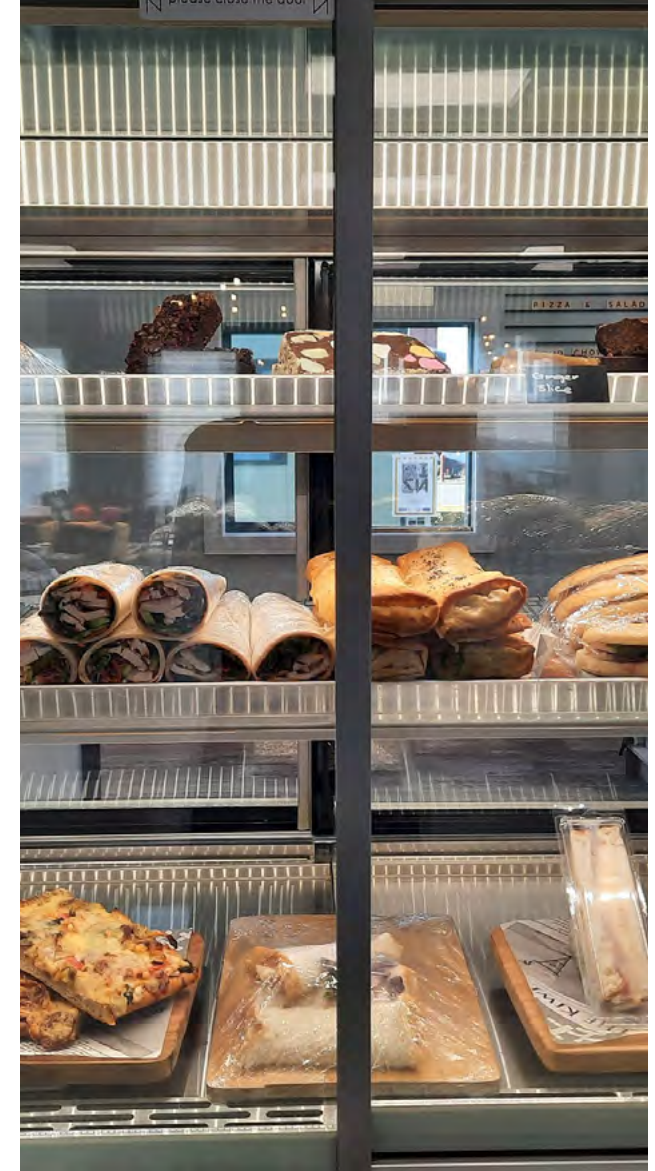
## Fill empty shops

Residents of the Wallace Takitimu area share a desire to see the empty shops within the towns filled to create vibrant main street areas.

Suggestions included attracting more businesses to the area, encouraging Council to give rates rebates to landlords, as well as supporting current businesses so that they don't have to close.

All across the country, physical stores struggle to compete with online commerce. With vacant properties and changing town centre uses, towns are starting to accept the idea of town centre as a different kind of experience that complements rather than competes directly with out-of-town retail parks and internet shopping.

There is a move away from retail being the prime driver, to a multifunctional destination, with retail playing a part alongside community, leisure, civic and cultural activities.



## Employ locally

The community has highlighted the need to employ locally and stop the centralisation of contracts (mainly in relation to local and central government authorities) which will contribute to growth within the area.



## Destination management

Encouraging visitors to the Wallace Takitimu area is also important in creating a vibrant community with a view to attracting people to come back and set up business in the area.

To do this, the community have signalled that they need to develop and promote new attractions and events, provide good accommodation options (including a camping ground) and market the area to domestic and international visitors.





# OUTCOME 1 ACTION PLANS



ACTION	COMMUNITY	WTCB	PARTNERS	TIMEFRAME
Fill vacant shops within the Wallace Takitimu area	Set up a Wallace Takitimu business group and develop an action plan to fill vacant shops within the area	Work with the Wallace Takitimu business group in assisting to fill vacant shops within the area	<ul style="list-style-type: none"> <li>• Creative groups</li> <li>• Local groups and organisations</li> <li>• Local businesses</li> <li>• Great South</li> <li>• Southland District Council</li> </ul>	Short-term
Develop and implement a Wallace Takitimu Destination Management Plan that includes product development, promotion and marketing of the area and infrastructure and funding requirements	Contribute to the development of the plan	Facilitate the development of a destination management plan in collaboration with Great South and the community	<ul style="list-style-type: none"> <li>• Local groups and organisations</li> <li>• Local businesses</li> <li>• Great South</li> <li>• Southland District Council</li> </ul>	Short-term





ACTION	COMMUNITY	WTCB	PARTNERS	TIMEFRAME
Develop new events to draw in visitors to the area	Work with existing groups and businesses to establish an events committee to develop new events to draw in visitors to the area	Provide communications support and financial assistance where possible	<ul style="list-style-type: none"> <li>Local groups and organisations</li> <li>Local businesses</li> </ul>	Short to medium
Ensure that Otautau retains a camping ground	Work with Council to provide a solution to the closure of the camping ground	Work with community in developing options for the camping ground in Otautau	<ul style="list-style-type: none"> <li>Community groups and organisations</li> <li>Local businesses and organisations</li> <li>Southland District Council</li> </ul>	Short-term
Celebrate success in our communities	Feed back to the community board information about local successes (eg, sporting, cultural, academic) in the area – individual or groups and both commercial and social	Help to communicate the success of the people, groups, clubs and businesses in the area	<ul style="list-style-type: none"> <li>Sporting and cultural groups</li> <li>Local businesses</li> <li>Clubs and organisations</li> </ul>	Ongoing





## OUTCOME TWO

WALLACE TAKITIMU  
IS A STRONG,  
CONNECTED  
AND INCLUSIVE  
COMMUNITY

The community value living in a strong community where its people and towns are supportive of each other, where they still portray 'good old-fashioned values', and where groups of all ages and stages integrate and mix well.

The community are also appreciative of those who volunteer for various groups and organisations. However, they would like to see more residents put their hand up for volunteering. To build on community spirit, residents suggested the development of a community hub, more activities for young people and holding more social and sporting events.





How will we ensure our community continues to be  
strong, connected and inclusive?



# CONNECTED

## COMMUNITY IDEAS

### Community hub

Residents shared a strong desire to develop a community hub for the area. Suggestions included a community cafe or using the community centre as a hub for crafts, games and even a movie theatre.

The purpose of this is to create a space where all residents can come together, socialise and enjoy participating in various activities. It could also be a space for visitors to use.



### More sporting and social events

As the community spirit is strong in Wallace Takitimu area, there is an appetite for more social and sporting events.

This will also help to connect everyone and will build stronger resilience among the community.





## More activities for our young people

Provision of more activities and facilities for our young people was suggested.

Ideas such as the development of a bike track and skate park, holding triathlons, fishing competitions and using the Otautau Arboretum more for family events were suggested.

Involving our young people in projects that will affect them will help them to develop ownership of the facility/activity and will ensure the success of the project.





## OUTCOME 2 ACTION PLANS



ACTION	COMMUNITY	WTCB	PARTNERS	TIMEFRAME
Investigate the feasibility of developing a community hub for the Ohai and Nightcaps area	Set up a committee to develop a feasibility study on the creation of a community hub for the Ohai and Nightcaps area	Community leadership team assist the community to set up a committee to investigate the feasibility of developing a community hub for the area	<ul style="list-style-type: none"> <li>Local community groups and organisations</li> <li>Funding agencies</li> <li>Local businesses</li> <li>Southland District Council</li> </ul>	Medium
Encourage more residents to volunteers for groups, services, organisations or activities and events	Hold a family event (eg, an end-of-year Christmas barbecue) and promote volunteerism for the various services and organisations within the community. Educate residents on different ways to become involved. Understand the community's barriers to volunteering and come up with ways of overcoming these barriers	Provide communications support as necessary	<ul style="list-style-type: none"> <li>Local community groups and organisations</li> <li>Southland District Council</li> </ul>	Short-term





ACTION	COMMUNITY	WTCB	PARTNERS	TIMEFRAME
Development of projects/activities for young people to do/participate in	Hold a youth workshop to establish what activities the young people of the area would like to see developed. Work with our young people to help see their ideas come to fruition.	Facilitate a workshop with our young people of Wallace Takitimu to determine what activities and facilities they would like to have in their area. Assist in resourcing, providing advice and financial assistance where possible	<ul style="list-style-type: none"> <li>• Local community groups and organisations</li> <li>• Local businesses</li> <li>• Southland District Council</li> <li>• Local youth</li> <li>• Funding agencies</li> </ul>	Short-term





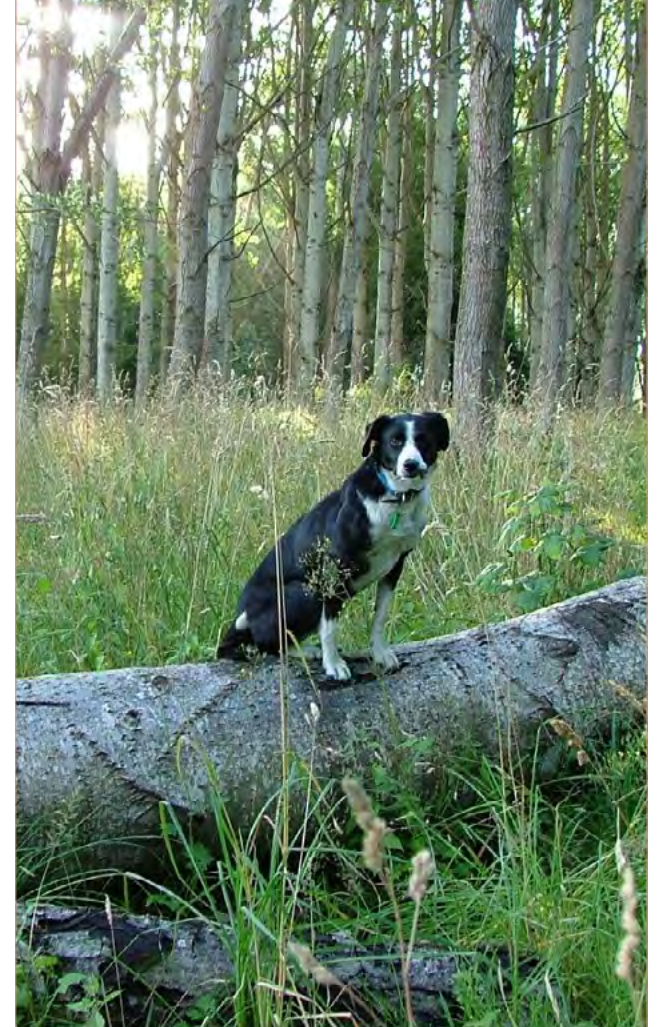
## OUTCOME THREE

A HEALTHY AND SAFE  
COMMUNITY WITH  
ACCESS TO QUALITY  
FACILITIES, AMENITIES  
AND SERVICES

The Wallace Takitimu residents value their good recreational facilities within the area, having good access to educational facilities as well as emergency services.

Suggested opportunities to improve the healthy and safe lifestyle of the community include the provision of aged care and medical facilities to our elderly, improving the provision of safe walkways and the provision of transport options for residents to be able attend appointments and activities.





How will we improve our  
safe and healthy lifestyle?



# CONNECTED

## COMMUNITY IDEAS

### Supporting our ageing population

Providing good local care that caters to the ageing community was one of the major challenges that residents highlighted.

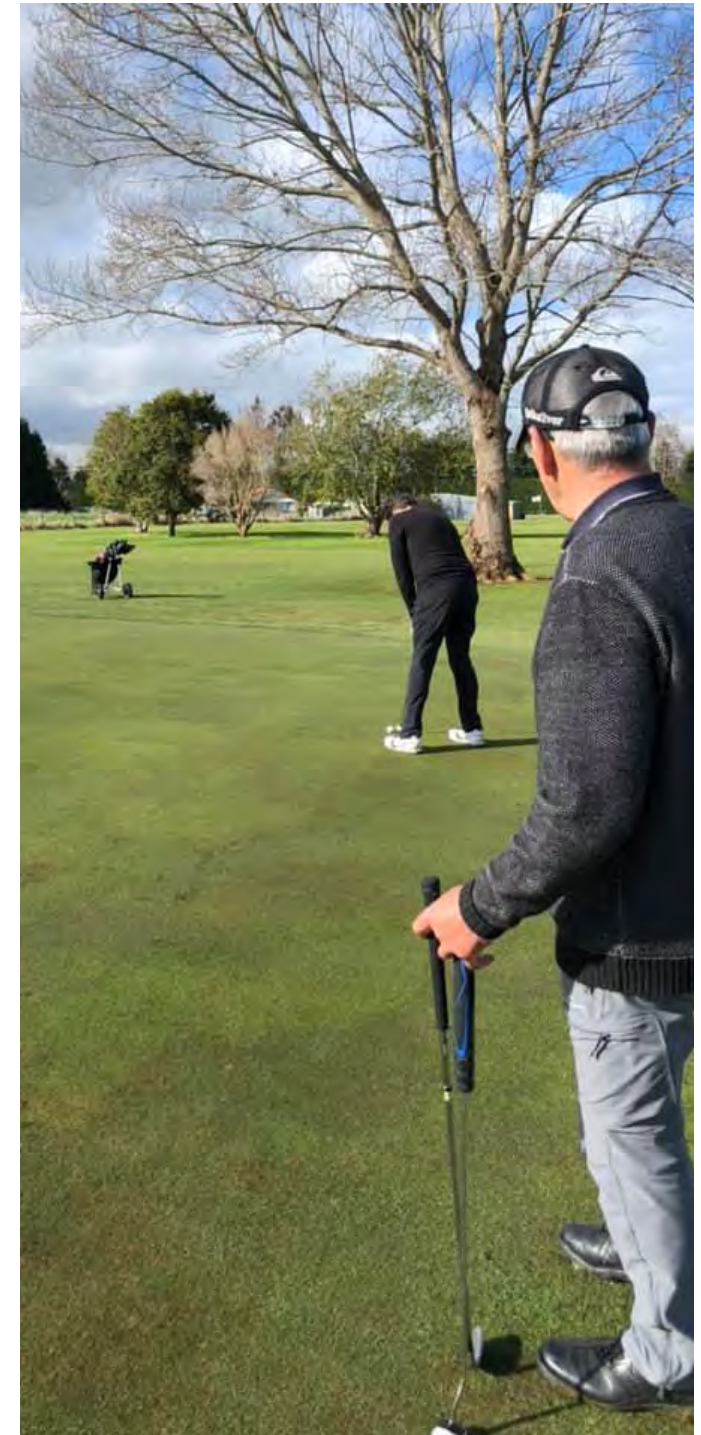
The development of a retirement village with medical facilities was suggested as an opportunity for the area so the elderly within the community don't have to relocate to larger areas.



### Public transport

The community share the desire for there to be some form of public transport in the area.

This would help to ensure people still had their independence and are able to get to medical appointments, do their shopping or get to sports activities.





## Walkways

Residents expressed concern over the lack of safe walkways within the area, particularly in relation to mobility scooters.

As the population ages, this is a real issue for towns all over New Zealand.

The community have suggested that corrections workers and local contractors work together to provide safe walkways for the community.





# OUTCOME 3 ACTION PLANS



ACTION	COMMUNITY	WTCB	PARTNERS	TIMEFRAME
Develop and improve quality walkways within the Wallace Takitimu area	Notify Southland District Council when there are walkway issues so that they can be fixed in a timely manner	Ensure SDC is aware and responds to walkway issues within the Wallace Takitimu area in a timely manner.  Assess the need for walkways in the Wallace Takitimu area and ensure development of these in consultation with the community	<ul style="list-style-type: none"><li>Southland District Council</li></ul>	Short-term





How can we ensure we maintain access to  
quality facilities, amenities and services?





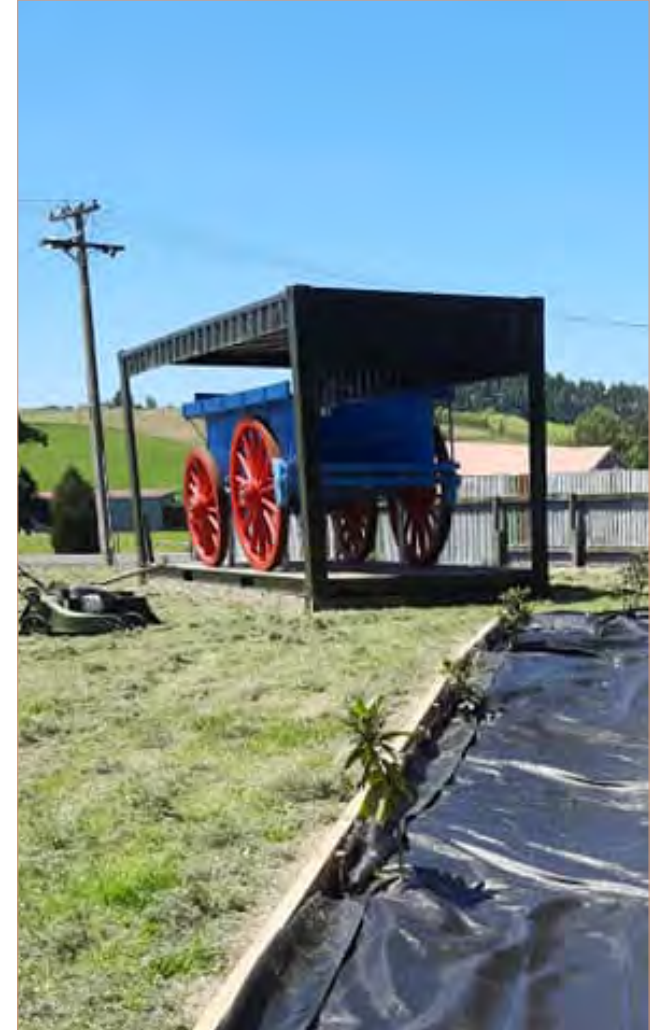
## OUTCOME FOUR

### A COMMUNITY WHOSE COUNCIL FOSTERS COMMUNITY ENGAGEMENT

The Wallace Takitimu area values the work Southland District Council community partnership leaders provide to the community. However, there is concern around the level of engagement the community has in relation to Council decisions.

There is a perception that the community is not listened to by Council and agreement that there should be better prioritisation and transparency around spending of available rates money. Ensuring Council provides further leadership on Council-related issues also came up in the workshop.





How will we ensure our community is  
**connected and engaged?**



# CONNECTED

## COMMUNITY IDEAS

### Community engagement

Wallace Takitimu residents agreed that people needed to be valued as individuals within the community by council. The community would like leaders to further consult with and understand their communities. After council-led meetings with the community on various issues, it was suggested that agreed outcomes and progress be reported on back to the community.



### Rates transparency

Residents are concerned that there is a lack of transparency in regards to where rates are being spent and there is a perception that Wallace Takitimu are 'not getting their fair share'. Further communication, consultation and education in regards to rates spend is suggested as a way of assuring the community rates are being spent wisely.





## Leadership

Residents felt that Council could provide stronger leadership by developing rules in regards to property presentation in the Wallace Takitimu area.

Residents were also concerned in regards to quality and timeliness of roading maintenance.





# OUTCOME 4 ACTION PLANS



ACTION	COMMUNITY	WTCB	PARTNERS	TIMEFRAME
Encourage participation by the community on Council issues that affect them and ensure that they are heard by Council	Engage in the process of the development of the Wallace Takitimu Community Board plan and work with key stakeholders to ensure actions are implemented	Ensure the community is engaged during the process of the development of the Wallace Takitimu Community Board plan and in the implementation of the plan	<ul style="list-style-type: none"> <li>Local groups and organisations</li> <li>Local businesses</li> <li>Southland District Council</li> <li>Local youth</li> <li>Great South</li> </ul>	Short-term
Develop a Wallace Takitimu Community Board communications plan so that Council can engage with the Wallace Takitimu community more effectively	Contribute to the development of a Wallace Takitimu Community Board communications plan between Council and community	Facilitate the development of a Wallace Takitimu Community Board communications plan for the Wallace Takitimu area	<ul style="list-style-type: none"> <li>Local groups and organisations</li> <li>Local businesses</li> <li>Southland District Council</li> <li>Local youth</li> </ul>	Short-term
Further engagement in regards to transparency of rates	Engage in the process of setting rates for annual plans and long-term plans	Engage the community more in the process of setting rates	<ul style="list-style-type: none"> <li>Southland District Council</li> <li>Community</li> </ul>	Short-term





ACTION	COMMUNITY	WTCB	PARTNERS	TIMEFRAME
Provide further leadership in ensuring our infrastructure (eg, roading) is maintained to a quality standard	Notify SDC of any maintenance required in regards to our infrastructure	Ensure maintenance is carried out on our infrastructure in a timely and cost effective manner	<ul style="list-style-type: none"> <li>• Southland District Council</li> <li>• Local contractors</li> </ul>	Short-term
Investigate if rules can be developed around presentation of properties in the Wallace Takitimu area	Ensure properties are tidy and that waste is removed and disposed of in a sustainable manner	Investigate the possibility of development rules in regards to property presentation	<ul style="list-style-type: none"> <li>• Southland District Council</li> </ul>	Short-term



# DISTRICT BUSINESS OVERVIEW

As our boards wanted to ensure local businesses were represented in this plan, a district-wide survey was conducted to capture a snapshot of their views.

The main advantage identified for businesses in the south was being on the main tourist route. Other benefits included a supportive community and loyal customers, centrality of location, close proximity to Queenstown and less competition.

Challenges faced were seasonality, labour shortages, unreliability of the internet and phone coverage, power cuts, council red tape and issues with the delivery of goods.

Respondents stated that they foresee business growth in the next five years as being 67% – based on 0% being none at all and 100% significant growth.

Comments included:

- We will only be able to expand when we find more staff to employ
- There is expected increase in the building industries and maintenance work
- We are actively investing and growing our business and we work with the USA and Australian markets which are still strong performers
- Council's bridge closures are challenging for us
- Increase of raw materials available
- Over the last five years we have expanded to cover more areas
- We only have a small site so there is limited potential for further growth
- My business is hospitality and tourism based, hospitality is directly affected by rural economy, any decline in farmer income would have a direct impact on their disposable income, therefore it is impossible to predict future trends
- Tourism has had a steady increase over the years

## **Southland district a better place to operate a business - attracted the following comments:**

- Better services - more reliable internet etc
- Yes, rental properties would be great, the lack of accommodation here can be and is a real problem especially for staff
- Establishing a business operators organisation
- Easing of red tape and costs of compliance
- Tidy up our main streets where businesses are located
- Getting people to support and shop local
- Maybe a community business Facebook page where we can share and support each other. I would like to know the other business owners in my community and share ideas
- We will need to invest in new housing and visitor accommodation
- Vastly improved internet required
- More public toilets and tourist information regarding this





Economic stability  
plays an important  
role in the future of  
our community.

Approximately 38%  
of respondents had  
connected with their  
community board.

Comments included:

- Local board members have been positive, and several have visited/maintained contact. Very encouraging
- Just thought of it now
- The community board members aren't business focused, it's not their area of expertise
- Yes, through the local business association
- Never thought of it
- I have discussed it with many members of the community, this will have filtered through to the community board I'm sure. I have never been invited or asked my opinion directly from our community board
- Not sure of the process how to connect with them





# YOUTH ARE OUR FUTURE AND THEIR OPINION COUNTS.

Led by the Southland District Council youth councillors, a **district-wide survey** was conducted to gauge the views of young people to be included in this community board plan.

In collating the responses, a genuine sense of community featured highest among things Southland youth liked most about living in the district.

The people, small town vibe, feeling safe and the surrounding environment and landscape rated highly.

Successfully enhancing communities with a youth focus would include more activities, opportunities, events, shops and facilities as a place to hang out. Three major issues identified as having an impact were the mental health and wellbeing of young people, diversity and inclusion, and climate change.

85% of survey respondents believed mental health was a significant issue, with 65% believing there was not sufficient access to help and support.

Comments included:

- There's still a lot of stigma around mental health
- Young males and the farming community are at risk
- People don't feel safe to talk
- No-one wants to talk to the school guidance counsellor
- Good support in school but once kids have left school there's nothing
- Invercargill is too far to travel for services
- It's a problem everywhere
- Some individuals have mental health issues but the majority don't
- I don't know how to access support but I probably should





95%

feel accepted in their community.

57%

do not think there are enough opportunities in Southland to express their identity.

68%

feel safe to express their identity.

Comments included:

- There's a fear of judgement
- Southland is very judgemental and aren't good at accepting differences
- There is LGBTQ phobia
- If you aren't involved with rugby or sports, you aren't included in the community
- Everyone in the community is included
- There's more openness to multiculturalism
- A lot of racism here
- Some people get beaten for being gay and expressing it
- We need more festivals and events to celebrate people





## In our evolving world, youth are acutely aware of climate change and the role they have to play.

Youth rated the level their community was responding to climate change at 42%, with 0% being not at all and 100% responding extremely well. Reasons included that a lot of people in Southland don't believe in climate change, it's easy to turn a blind eye, the older generation are often stubborn and it's not a priority for Southland's communities as there are bigger issues right now.

Identified among the best ways to respond to climate change were more recycling, reducing plastic, improving farm practices and changing the way we think.

Comments included:

- We need more effective rubbish disposal in rural areas
- We need to promote locally sourced foods
- It needs to be a priority, not just something in the news
- Initiatives like boomerang bags are quite cool
- The issue isn't advertised locally
- People are finally speaking up about it
- Most people have more important stuff to worry about
- Climate change doesn't exist
- People see environmentally friendly alternatives as inconvenient
- There's no public pressure from Council





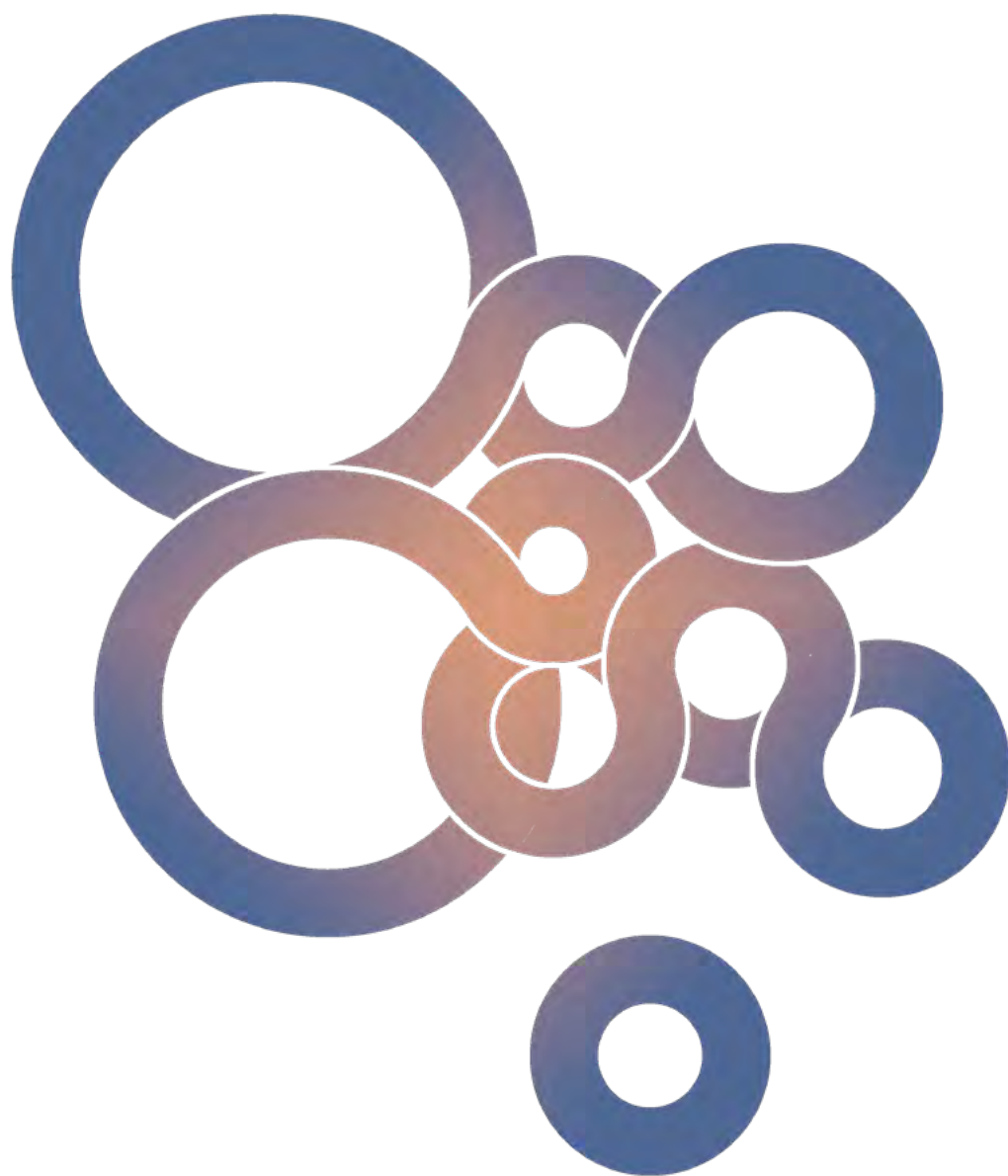
11



Otatau Vets Ltd







Communities  
hold Southland  
together

facebook.com/[wallacetakitimucommunityboard](https://www.facebook.com/wallacetakitimucommunityboard)