



Community board plan

2021 - 2024

WAIHOPAI TOETOE

WELCOME...

He Koreo mai i te Heamana.



It is our privilege to present this Waihopai Toetoe Community Board Plan to you.

We live in a special place, surrounded by bountiful land and an array of opportunities.

As we embark on a new journey together, this plan sets out initiatives to ensure it remains a positive and progressive one.

Information contained in this document has guided us when establishing aspects of our Long Term Plan.

Waihopai Toetoe is fortunate to have such a diverse community board area, featuring tourism in the Catlins, significant industries and extensive agriculture production.

We are not immune to our challenges, including coastal erosion issues, and are tasked with managing assets like significant reserve areas and five community pools despite a small community base.

While individually unique, each of the areas within our boundary shares a unwavering community spirit. It is our aim to support these communities and continue to help them both thrive and survive in these uncertain times.

We acknowledge the precarious juggling act of maintaining services while keeping rate rises at acceptable levels. To help with these efforts, we are committed to a collaborative approach, engaging with our communities on projects

designed to shape and develop local areas. Ultimately this will enable community-led action to flourish.

Our people play a vital role and we respect the dedication of the many volunteers in our area whose efforts have had a significant impact. We hope to build on this into the future and grow the network of people committed to making a difference within our community.

With a focus on collaboration, we will achieve together.

Dam

OUR VISION



Waihopai Toetoe Community Board Plan

The Waihopai Toetoe community were invited to a community workshop.

The community told us what they loved about their area, what they saw as weaknesses and challenges of living in their area and what opportunities they saw for the Waihopai Toetoe area going forward.



The Waihopai Toetoe communities include:

Ashers, Brydone, Bush Siding, Chaslands, Curio Bay, Dacre, Edendale, Fortification, Fortrose, Glenham, Gorge Road, Grove Bush, Haldane, Kamahi, Kapuka, Kapuka South, Kennington, Longbush, Mabel Bush, Matakura Island, Menzies Ferry, Mimihaui, Mokoreta, Mokotua, Morton Mains, Niagara, Ota Creek, Otara, Oteramika, Oware, Pine Bush, Progress Valley, Pukewao, Quarry Hills, Rakahouka, Redan, Rimu, Roslyn Bush, Seaward Downs, Slope Point, Spurhead, Te Peka, Te Tipua, Timpanys, Titiroa, Tokanui, Tutarau, Waiarikiki, Waikawa, Waikawa Valley, Waimahaka, Waimatua, Waituna, Woodlands, Wyndham.

180 million years ago

Conifers were buried by volcanic mud flows and gradually replaced by silica to produce the fossils now exposed by the sea at Curio Bay.

900 - 1700 AD

Catlins was first inhabited by the Maori people.

1836

Tuturau was the most southern point to be captured by a northern tribe, which was recaptured by Ngāi Tahu and prevented Te Pūoho from Ngāti Tama from further capturing other parts of the South Island.

1881

One of New Zealand's worst shipping disasters, **the Taranua**, foundered off Waipapa Point with the loss of 131 people.

1881

Established in 1881, **Edendale dairy factory** commenced operations on the 18th of January 1882 and is **NZ's longest running dairy manufacturing site.**



Mid 1960s

Maple Glenn gardens was started.

1976

The **Waituna Wetland Scientific Reserve** was designated a Ramsar Wetland of International Importance in 1976 and classified as a scientific reserve in 1983.

2018

Curioscape Visitor Centre officially opens at Curio Bay

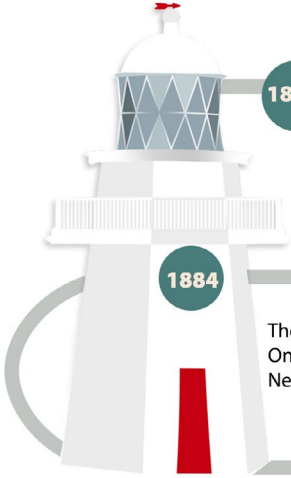
1880s

Tokenui settlement began on the back of **timber, flax milling and dairying industry.**



1884

The **Waipapa Point lighthouse** begins operation. One of the last two wooden lighthouses built in New Zealand, it is still active today.



1904

The first open cast mine in Southland was opened at Ashers after the discovery of lignite in the area.



Mid 1920s

To serve the **growing forestry industry**, a bush tramway was built. It ran from Te Peka railway station on the Tokenui Branch eastwards to a sawmill in Fortification.



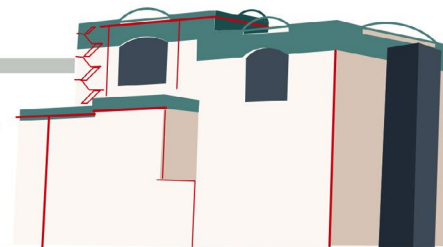
1988

The first Edendale **Crank Up Day** was held.



2009

The Edendale Fonterra dairy factory becomes the biggest raw milk processing site in the world.



2021

Establishment of Whakamana te Waituna te Mahika Kai Pa



Dutch tulip bulb producer Triflor NZ Ltd bought a small site on the Edendale-Seaward Downs Rd and built a bulb grading and packing shed.



Waihopai Toetoe area at a glance...

POPULATION 6243

Male	53%
Female	47%
Under 15	23%
15-29 years	17%
30-64 years	48%
65 and over	12%

ETHNIC MAKEUP

European	88%
Maori	11%
Pacific people	1%
Asian	7%
Other	1%

WORK AND LABOUR FORCE STATUS

Employed full-time	61%
Employed part-time	17%
Unemployed	2%
Not in the labour force	20%

HOME OWNERSHIP

Own or partly own	56%
Don't own or hold in a trust	44%

ROADS

Sealed roads	522.23 km
Unsealed roads	935.74 km

BRIDGES

244

AREA

238,140 hectares

WATER SUPPLIES

Edendale	
Wyndham	
Curio Bay (partial supply to camp ground and community facility)	

WASTE WATER SUPPLIES

Edendale	Wyndham
Tokanui	Gorge Road
Curio Bay	

STORMWATER

Edendale	Wyndham
Tokanui	

CEMETERIES

Trust cemeteries	3
Council owned	5
Closed cemeteries	2

WAR MEMORIALS 11

HALLS

5

MAJOR EMPLOYERS

Fonterra
Blue Sky Meats
Farm service companies
Agricultural contractors
Transport operators
Menzies College
Tulip Farms
Nurseries

SCHOOLS

Edendale	Gorge Road
Glenham	Tokanui
Menzies College	Rimu
Tuturau	Woodlands
Wyndham	

HEALTH FACILITIES

Wyndham Edendale Community Health Centre
Tokanui Health Centre
Wyndham and Districts Community Resthome



OUR VALUES

The Waihopai Toetoe area values its people, the loyalty among the community, their strong volunteerism, their whānau, whakapapa and mana whenua, strong community spirit, their diverse ages and their generational continuity.

To further ensure the Waihopai Toetoe community is engaged and connected, residents see an opportunity to encourage more residents to volunteer and community groups to connect with each other, ensure our elderly are connected with the community and have the right services they need and to encourage our young people to become further involved within the community.

Residents expressed a strong desire to ensure Waihopai Toetoe is an attractive, healthy and safe area to live with good access to quality facilities, amenities and services. Developing cycleway networks, development of beautification plans for each area, improving cellphone and internet coverage and retaining health services were suggestions on how to achieve this outcome.



By the community for the community

This plan is a reflection of a community working together to build a better now and a future we can all be proud of.



Four main themes emerged when discussing the Waihopai Toetoe area

1

An attractive, healthy and safe community with access to quality facilities, amenities and services

3

Our unique, natural environment is healthy and protected

2

Our community is connected and engaged

4

Our communities have the opportunity to celebrate their history and heritage



How can we create an attractive, healthy and safe community with access to
quality facilities, amenities and services?

1 COMMUNITY

Cycleway to link Edendale and Wyndham

A popular suggestion by residents is the development of a cycle/walking trail to link Edendale and Wyndham.

This will create a safe, accessible way of further connecting the communities while providing for a healthy lifestyle.



OBJECTIVE	COMMUNITY IDEAS FOR ACTION	COMMUNITY BOARD ACTIONS	PARTNERS	TIMELINE MEASURES
Develop a cycle network connecting the Edendale and Wyndham communities.	Set up a working group to investigate the feasibility of developing a cycle network between Edendale and Wyndham.	Support and encourage the development of the cycle network by providing financial assistance and working with SDC in terms of resource and staff time availability.	<ul style="list-style-type: none"> Southland District Council Great South Community organisations Waka Kotahi NZ Transport Agency Local sporting groups Promotions groups 	Long term

OBJECTIVE	COMMUNITY IDEAS FOR ACTION	COMMUNITY BOARD ACTIONS	PARTNERS	TIMELINE MEASURES
Develop and implement beautification plans for Edendale, Wyndham, Woodlands, Gorge Road, Tokanui.	Work with Council and other key stakeholders to develop beautification plans for the areas.	Facilitate the development of beautification plans for Edendale, Wyndham, Woodlands, Gorge Road and Tokanui.	<ul style="list-style-type: none"> Southland District Council Local groups and organisations Local businesses Schools 	Medium to long term

Our town centres

Neighbourhood beautification, if it is approached with the right attitude, can lead to more interaction between neighbours from diverse backgrounds, enabling more neighbourhood life, and a neighbourhood look and feel that attracts new residents and businesses and supports economic development and a sense of community.

Residents indicate that they are concerned about the attractiveness of their communities, including the state of the buildings along the main street, and also ensuring that existing gardens and reserves are well maintained.





OBJECTIVE	COMMUNITY IDEAS FOR ACTION	COMMUNITY BOARD ACTIONS	PARTNERS	TIMELINE MEASURES
Develop town centre master plans.	Assist community board in identifying town centres and being involved in the development of a plan.	Investigate opportunities to have a town centre masterplan and work with the community to identify the town centres.	<ul style="list-style-type: none"> • Southland District Council • Local groups and organisations • Local businesses 	Long term



OBJECTIVE	COMMUNITY IDEAS FOR ACTION	COMMUNITY BOARD ACTIONS	PARTNERS	TIMELINE MEASURES
Develop a network of walking tracks, Edendale, Wyndham and Waikawa.	Engage with the communities and facilitate a workshop.	Co-ordinate and support projects and possibly provide financial assistance.	<ul style="list-style-type: none"> • Southland District Council • Community organisations • Wildlife sanctuary • Schools • Environment Southland • DOC 	Medium to long term



OBJECTIVE	COMMUNITY IDEAS FOR ACTION	COMMUNITY BOARD ACTIONS	PARTNERS	TIMELINE MEASURES
Ensure 'fit for purpose' infrastructure.	Ensure that any issues are reported via Council's Request for services system. Provide feedback to Council during engagement and consultation opportunities.	Ensure projects required are included in the Long Term Plan and that financing is a planned activity. Undertake a review of the community board area halls and playgrounds.	<ul style="list-style-type: none"> • Southland District Council • Waka Kotahi NZTA • Halls committees 	Short to long term



Are our young people inspired enough to want to be more involved in their community?

YOUTH

COMMUNITY IDEAS

Connecting with our young people was identified as an opportunity at the community workshop.

Involving our young people in projects that will affect them will help to develop a stronger community; it will give them the confidence to participate and will develop their interest in being part of the solution.

This, in turn, can build the cohesiveness and capacity of the Waihopai Toetoe community.



OBJECTIVE	COMMUNITY IDEAS FOR ACTION	COMMUNITY BOARD ACTIONS	PARTNERS	TIMELINE MEASURES
Activities that engage youth and encourage participation.	Organise a youth workshop to establish what activities and/or facilities that young people in the area would like to see developed.	Support, encourage and facilitate a workshop for youth in the area. Possible financial assistance and work with Council in providing advice and resourcing if possible.	<ul style="list-style-type: none"> Local community groups SDC Youth Council Funding agencies Local businesses Southland District Council 	Medium term



CONNECTED

2

Our recreational facilities and amenities, our friendly, connected, generational community, our local services and facilities and our natural environment.

Residents agree that it is important to ensure the elderly are connected to the community.

Residents acknowledge the value of aged-care facilities in the Waihopai Toetoe area. However, it is suggested that more can be done to support our ageing population by providing more services and activities.

Shuttles for appointments in Invercargill, holding activities they can share together and connecting to schools and our young people are suggested.



What would it take to have a community that is
connected and engaged?

PEOPLE

BRINGING PEOPLE TOGETHER

Residents share a desire to encourage more people in the community to volunteer for community groups and service organisations.

A common issue among small communities is that the same people are volunteering for everything and although they view their volunteerism as strong within the community, residents are calling out for more people to become involved so that they can ensure future sustainability for their groups, services and organisations.



With busy lives, it can be hard to find time to volunteer. However, the benefits of volunteering can be enormous. They include connecting with the community, learning new skills, and helping to reduce stress, combat depression and provide a sense of purpose.

OBJECTIVE	COMMUNITY IDEAS FOR ACTION	COMMUNITY BOARD ACTIONS	PARTNERS	TIMELINE MEASURES
Ensure that community groups are connected with each other and with other stakeholders.	Look at ways to bring the community groups and stakeholders together.	Work with Council to facilitate a workshop, provide communication resource and staff support.	<ul style="list-style-type: none">Local community groups and organisationsDepartment of Internal AffairsSouthland District Council	Medium term

OBJECTIVE	COMMUNITY IDEAS FOR ACTION	WTTCB ACTIONS	PARTNERS	TIMELINE MEASURES
Connect our young people in assisting in provision of services/ activities for the elderly.	Approach schools in the area and determine if there are opportunities that may be included as part of their curriculum.	Invite principals to a workshop.	<ul style="list-style-type: none"> • Rest homes • Community organisations • Schools 	Medium to long term



OBJECTIVE	COMMUNITY IDEAS FOR ACTION	COMMUNITY BOARD ACTIONS	PARTNERS	TIMELINE MEASURES
To have projects and activities for young people to participate in.	Facilitate a young people's workshop to establish what activities or facilities young people in the area would like to see developed and work with them to help see their ideas come to fruition.	Assist with resourcing, provide advice and financial assistance if required.	<ul style="list-style-type: none"> • Southland District Council • Community organisations • Local businesses • Young people • Funders 	Short term



OBJECTIVE	COMMUNITY IDEAS FOR ACTION	COMMUNITY BOARD ACTIONS	PARTNERS	TIMELINE MEASURES
To form and strengthen relationships with iwi.		Approach Awarua and Hokonui runanga and express a desire to work and collaborate together and to develop a strong relationship.	<ul style="list-style-type: none">• Southland District Council• Runanga	Short to medium term



OBJECTIVE	COMMUNITY IDEAS FOR ACTION	COMMUNITY BOARD ACTIONS	PARTNERS	TIMELINE MEASURES
Connect and strengthen relationships with major businesses and industry in the community board area.		Identify and make a plan to enable this to happen.	<ul style="list-style-type: none"> Southland District Council Businesses and industry organisations 	Short to medium term

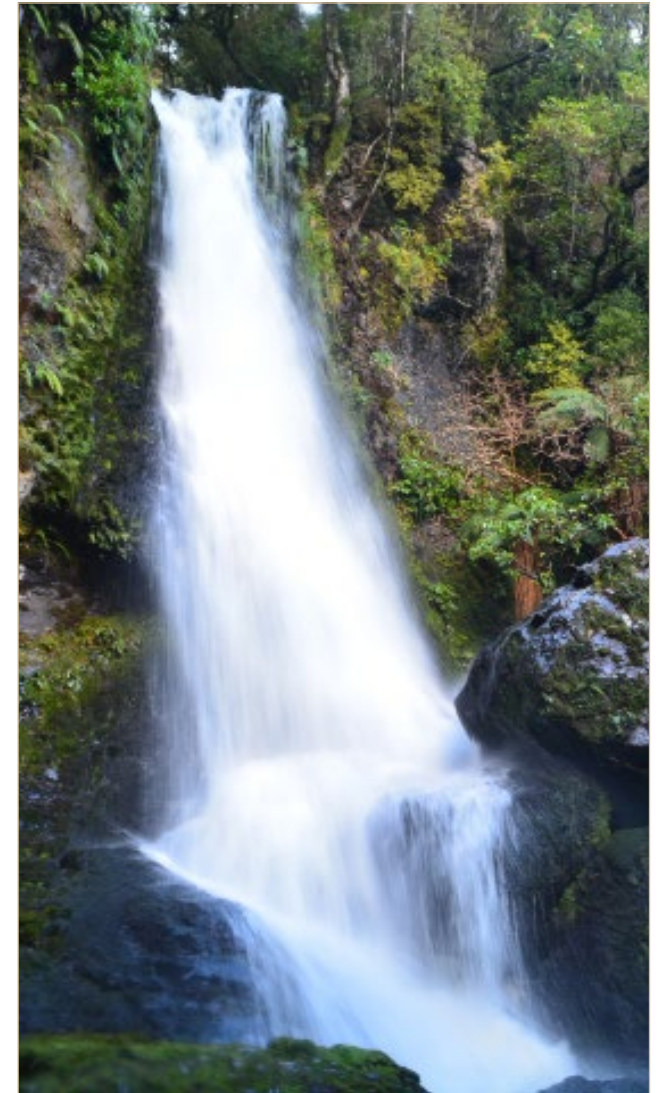
OBJECTIVE	COMMUNITY IDEAS FOR ACTION	COMMUNITY BOARD ACTIONS	PARTNERS	TIMELINE MEASURES
To investigate the feasibility of a health shuttle service in the area.	Approach potential service providers to act on this opportunity and investigate the possibility of purchasing a van and staffing with volunteers.	Investigate if financial assistance is available.	<ul style="list-style-type: none"> Local community groups and organisations 	Short term

ENVIRONMENT

3

Residents of the Waihopai Toetoe area value the natural environment surrounding them, including the Catlins, Waituna Lagoon and wildlife, as well as iconic attractions such as waterfalls, walks, views and scenic reserves.

As such the community wishes to treasure, protect and restore the special places, landscapes, native species and natural ecosystems of Waihopai Toetoe. Residents want to ensure that they have a clean, green environment.



How can we ensure our unique and
natural environment is healthy and protected?

TOURISM

KAITIAKITANGA GUARDIANSHIP

The Waihopai Toetoe area has outstanding landscapes and unique natural environments and waterways. The Catlins, in particular, is highly valued and a jewel in the crown.



The Catlins is one of New Zealand's most popular eco-tourism destinations with a thriving community, wildlife and environment that are respected and cared for by all. Developing and protecting these environments for future generations, while sharing them with visitors, is a key priority for the community board. This includes a focus on sustainability and responsible tourism. The community board believes a strategic approach is required and would like to be an active participant in this process.

Waituna Lagoon also sits within the Waihopai Toetoe Community Board area and is part of the internationally recognised 20,000ha Awarua Wetland.

The 1,350ha lagoon and immediately surrounding wetland known as the Waituna Wetland Scientific Reserve (an area of 3,500ha) was designated a Ramsar Wetland of international importance in 1976, with the wider wetland complex being included in 2008. A key commitment under the Ramsar Convention is to maintain and enhance the ecological health of the wetland.

Waituna Lagoon is one of the largest remaining wetland systems in New Zealand and is made up of a number of nationally significant ecosystems. Its cultural significance to Ngāi Tahu was recognised by a Statutory Acknowledgement under the Ngāi Tahu Claims Settlement Act 1998.

Ongoing work to improve the ecological health of Lake Waituna and its catchment led to the formation of the Whakamana Te Waituna Charitable Trust.

The trust is made up of representatives from the Department of Conservation, Fonterra, Environment Southland, Southland District Council, Te Runanga o Awarua, Te Runanga o Ngāi Tahu and two independent trustees.

The trust has been implementing a number of initiatives including a programme of work within the Waituna catchment focused on improving the health of the lagoon and ensuring the rural community thrives. Part of this work programme has focused on relieving the pressure on farmland from high lagoon levels by creating a landward buffer.

Residents recognise the importance of a healthy environment for tourism and wish to minimise the impacts of human activities on the environment. One of the biggest challenges the community faces is that of freedom campers disrespecting the environment.

OBJECTIVE	COMMUNITY IDEAS	COMMUNITY BOARD ACTIONS	PARTNERS	TIMELINE
Provide active support for the current strategic plans for the Catlins.		<p>Ensure that any development or projects within the Catlins are in line with the strategic plans for the area. These include the Catlins Tourism Partnership plan, Catlins Tourism Strategy, Vision for Curio Bay plan, Southland Murihiku Destination Strategy, Southland District Reserves and Open Spaces Strategy and SDC District and Long Term Plans.</p> <p>Actively look for opportunities for central government funding (eg, the Tourism Infrastructure Fund and the Responsible Camping Fund).</p> <p>Develop and strengthen relationships with key stakeholders.</p>	<ul style="list-style-type: none"> • Southland District Council • Clutha District Council • Great South • Environment Southland • Iwi • DOC • Other local agencies 	Short term
Ensure the visitor economy provides positive economic benefits for our communities and local businesses.		<p>Support efforts to find innovative ways to enable and encourage people to 'live, work and play' in our communities.</p> <p>Support and contributing to initiatives to support business development, 'living and working', and workforce skills development.</p> <p>Ensure that the recreational, cultural, landscape and ecological values of our communities are maintained for future generations.</p> <p>Attract and manage visitors within the Waihopai Toetoe area.</p>	<ul style="list-style-type: none"> • Southland District Council 	Short term
Provide active support for strategic plans for Waituna Lagoon		<p>Develop and strengthen relationships with key stakeholders.</p>	<ul style="list-style-type: none"> • Southland District Council • Fonterra • Environment Southland • Iwi • DOC • Ministry for the Environment 	Short term
Ensure that there are no adverse effects on the environment from visitors and freedom camping.	Identify problem areas and inform SDC as and when problems occur.	<p>Listen to any concerns in the community in regard to freedom camping and work with Council to take action in a timely manner.</p>	<ul style="list-style-type: none"> • Southland District Council 	Short term



ENVIRONMENT

MANAGEMENT PLANS

The community would like to take a co-ordinated approach in developing environmental management plans for each area to ensure Waihopai Toetoe is a place where everyone can enjoy the natural environment while protecting it for the future and controlling pests.



OBJECTIVE	COMMUNITY IDEAS FOR ACTION	COMMUNITY BOARD ACTIONS	PARTNERS	TIMELINE MEASURES
Develop environmental management plans for each area to manage and protect our environment.	Work in partnership with SDC and ES to develop environmental management plans for various areas within Waihopai Toetoe area.	To investigate alternate methods that are environmentally sustainable in particular for power and infrastructure (eg, effluent systems).	<ul style="list-style-type: none"> Southland District Council Thriving Southland Environment Southland 	Medium term

RESOURCES

Work with Environment Southland to ensure 80% of rivers and lakes are swimmable by 2030, as per the government's national target.

OBJECTIVE	COMMUNITY IDEAS FOR ACTION	COMMUNITY BOARD ACTIONS	PARTNERS	TIMELINE MEASURES
To have clean and swimmable waterways.	Work with Environment Southland to ensure 80% of rivers and lakes are swimmable by 2030, as per the government's national target.	Encourage and support Environment Southland in providing education and communication to the community and industry on how they can assist Environment Southland to meet the target of 80% of rivers and lakes being swimmable by 2030.	<ul style="list-style-type: none">• Southland District Council• Ministry for the Environment• Catchment groups• Environment Southland	Long term



Water and natural resources

how do we as a community sustain our area?

ARTS, CULTURE AND HERITAGE

4

Residents are proud of their region, their communities and their diverse heritage.

They would like to celebrate and acknowledge their arts, culture and heritage and how that contributes to their distinctive identity.

They would like to be able to tell their whakapapa (history) in an honest way and acknowledge the lesson that history has taught them to be able to reflect and celebrate their progress as a community.

Residents are extremely proud of their long generational arts, culture and heritage in the area.



What can we do to ensure our communities have the
opportunity to celebrate their history and heritage?

OPPORTUNITIES

COMMUNITY IDEAS

The Wyndham and Districts Historical Society secured funding to contract a heritage management consultant, John Coster, to undertake a feasibility assessment for the future development of a museum for Wyndham and surrounding districts.

The society has purchased a property on the corner of George Street and Ferry Road, Edendale, for the proposed new museum.



OBJECTIVE	COMMUNITY IDEAS FOR ACTION	COMMUNITY BOARD ACTIONS	PARTNERS	TIMELINE MEASURES
Develop a museum for the Wyndham and districts area to protect and preserve history of the area.	Conduct a feasibility study on the development of a new museum.	Assist the museum working group in development of a feasibility study to assess the merits of developing a new museum in the Waihopai Toetoe area.	<ul style="list-style-type: none"> Southland District Council Community organisations Heritage groups Funding organisations 	Medium to long term



OBJECTIVE	COMMUNITY IDEAS FOR ACTION	COMMUNITY BOARD ACTIONS	PARTNERS	TIMELINE MEASURES
Celebrate our history and heritage through projects, events and activities.	Organise and co-ordinate activities and events that celebrate our history and heritage and encourage communities to become involved.	Consider requests for financial assistance and assist with promotions.	<ul style="list-style-type: none">● Southland District Council● Community organisations● Local businesses	Short to medium term



OBJECTIVE	COMMUNITY IDEAS FOR ACTION	COMMUNITY BOARD ACTIONS	PARTNERS	TIMELINE MEASURES
Redevelop heritage sites within Waihopai Toetoe area that tell the Māori and European story (in Curio Bay and Waituna).	Investigate the setting up of a working group to develop and implement a Waihopai Toetoe heritage site plan for the area.	Assist the group with resources that may be required. Ensure the board recognises and understands the contribution of Māori and other cultures to the heritage of the area.	<ul style="list-style-type: none">• Southland District Council• Community organisations• Heritage groups• Funding organisations• Runanga	Long term



OBJECTIVE	COMMUNITY IDEAS FOR ACTION	COMMUNITY BOARD ACTIONS	PARTNERS	TIMELINE MEASURES
Investigate the development of a Heritage Trail (which may include a Wetland Trail).	Engage with the wider community and facilitate workshop.	Identify areas, develop plans, co-ordinate with interested stakeholders and explore funding options.	<ul style="list-style-type: none"> Southland District Council Community organisations Great South Thriving Southland Waituna Wetlands group Schools 	Medium to long term

DISTRICT BUSINESS OVERVIEW

As our boards wanted to ensure local businesses were represented in this plan, a district-wide survey was conducted to capture a snapshot of their views.

The main advantage identified for businesses in the south was being on the main tourist route. Other benefits included a supportive community and loyal customers, centrality of location, close proximity to Queenstown and less competition.

Challenges faced were seasonality, labour shortages, unreliability of the internet and phone coverage, power cuts, council red tape and issues with the delivery of goods.

Respondents stated that they foresee business growth in the next five years as being 67% – based on 0% being none at all and 100% significant growth.

Comments included:

- We will only be able to expand when we find more staff to employ
- There is expected increase in the building industries and maintenance work
- We are actively investing and growing our business and we work with the USA and Australian markets which are still strong performers
- Council's bridge closures are challenging for us
- Increase of raw materials available
- Over the last five years we have expanded to cover more areas
- We only have a small site so there is limited potential for further growth
- My business is hospitality and tourism based, hospitality is directly affected by rural economy, any decline in farmer income would have a direct impact on their disposable income, therefore it is impossible to predict future trends
- Tourism has had a steady increase over the years

Southland district a better place to operate a business - attracted the following comments:

- Better services - more reliable internet etc
- Yes, rental properties would be great, the lack of accommodation here can be and is a real problem especially for staff
- Establishing a business operators organisation
- Easing of red tape and costs of compliance
- Tidy up our main streets where businesses are located
- Getting people to support and shop local
- Maybe a community business Facebook page where we can share and support each other. I would like to know the other business owners in my community and share ideas
- We will need to invest in new housing and visitor accommodation
- Vastly improved internet required
- More public toilets and tourist information regarding this



Economic stability
plays an important
role in the future of
our community.

Approximately 38%
of respondents had
connected with their
community board.

Comments included:

- Local board members have been positive, and several have visited/maintained contact. Very encouraging
- Just thought of it now
- The community board members aren't business focused, it's not their area of expertise
- Yes, through the local business association
- Never thought of it
- I have discussed it with many members of the community, this will have filtered through to the community board I'm sure. I have never been invited or asked my opinion directly from our community board
- Not sure of the process how to connect with them



YOUTH ARE OUR FUTURE AND THEIR OPINION COUNTS.

Led by the Southland District Council youth councillors, a **district-wide survey** was conducted to gauge the views of young people to be included in this community board plan.

In collating the responses, a genuine sense of community featured highest among things Southland youth liked most about living in the district.

The people, small town vibe, feeling safe and the surrounding environment and landscape rated highly.

Successfully enhancing communities with a youth focus would include more activities, opportunities, events, shops and facilities as a place to hang out. Three major issues identified as having an impact were the mental health and wellbeing of young people, diversity and inclusion, and climate change.

85% of survey respondents believed mental health was a significant issue, with 65% believing there was not sufficient access to help and support.

Comments included:

- There's still a lot of stigma around mental health
- Young males and the farming community are at risk
- People don't feel safe to talk
- No-one wants to talk to the school guidance counsellor
- Good support in school but once kids have left school there's nothing
- Invercargill is too far to travel for services
- It's a problem everywhere
- Some individuals have mental health issues but the majority don't
- I don't know how to access support but I probably should



95%

feel accepted in their community.

68%

feel safe to express their identity.

57%

do not think there are enough opportunities in Southland to express their identity.

Comments included:

- There's a fear of judgement
- Southland is very judgemental and aren't good at accepting differences
- There is LGBTQ phobia
- If you aren't involved with rugby or sports, you aren't included in the community
- Everyone in the community is included
- There's more openness to multiculturalism
- A lot of racism here
- Some people get beaten for being gay and expressing it
- We need more festivals and events to celebrate people



In our evolving world, youth are acutely aware of climate change and the role they have to play.

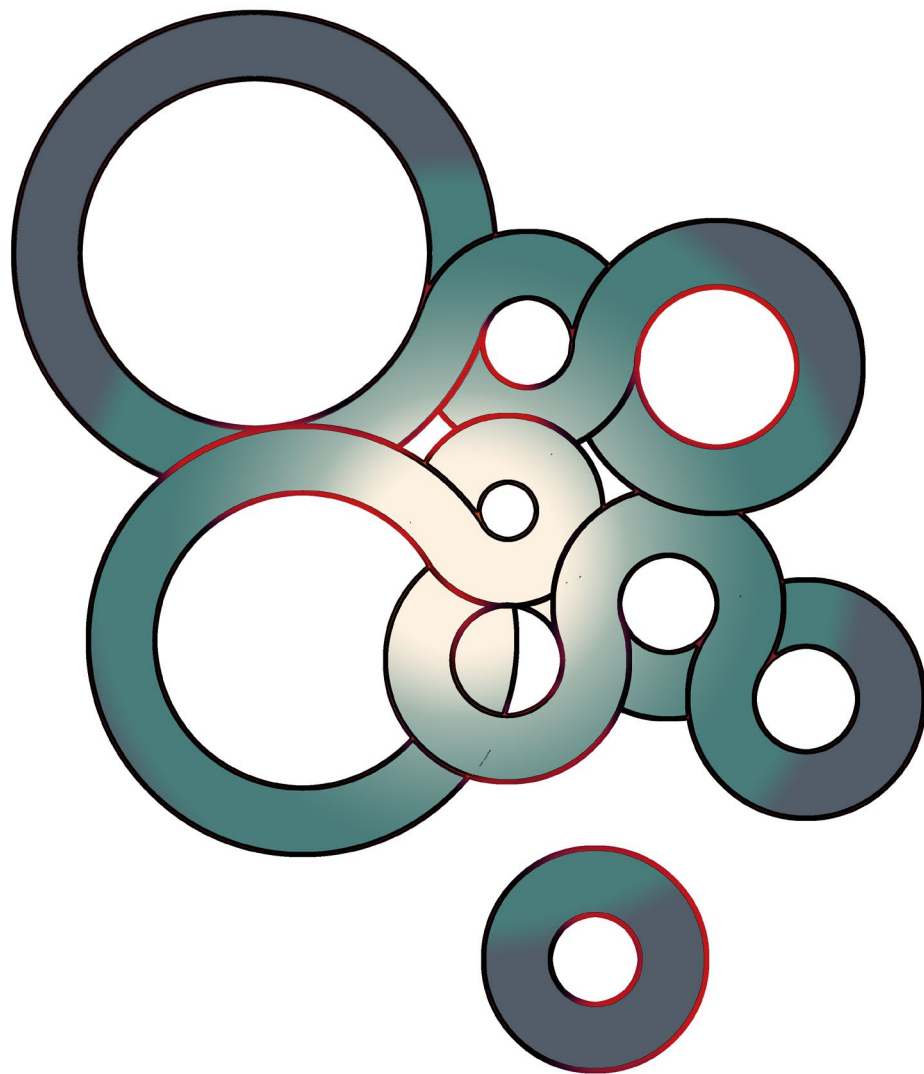
Youth rated the level their community was responding to climate change at 42%, with 0% being not at all and 100% responding extremely well. Reasons included that a lot of people in Southland don't believe in climate change, it's easy to turn a blind eye, the older generation are often stubborn and it's not a priority for Southland's communities as there are bigger issues right now.

Identified among the best ways to respond to climate change were more recycling, reducing plastic, improving farm practices and changing the way we think.

Comments included:

- We need more effective rubbish disposal in rural areas
- We need to promote locally sourced foods
- It needs to be a priority, not just something in the news
- Initiatives like boomerang bags are quite cool
- The issue isn't advertised locally
- People are finally speaking up about it
- Most people have more important stuff to worry about
- Climate change doesn't exist
- People see environmentally friendly alternatives as inconvenient
- There's no public pressure from Council





Communities
hold Southland
together

facebook.com/[waihopaitoetoe](https://www.facebook.com/waihopaitoetoe)